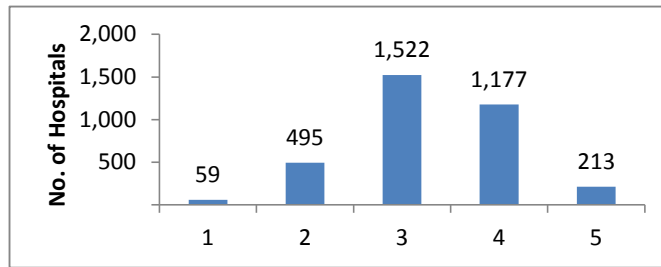


HCAHPS Stars Ratings Distributions for April 2018 Public Reporting (N= 3466 Hospitals)

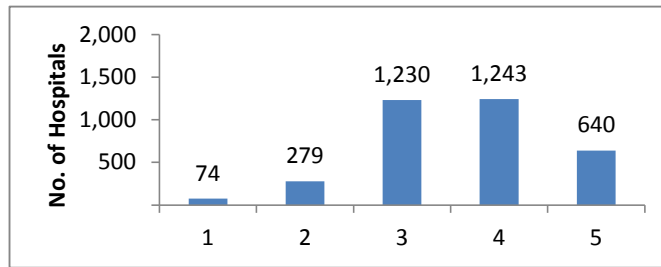
HCAHPS Summary Star Rating

Star Rating	N	%
1	59	2
2	495	14
3	1,522	44
4	1,177	34
5	213	6



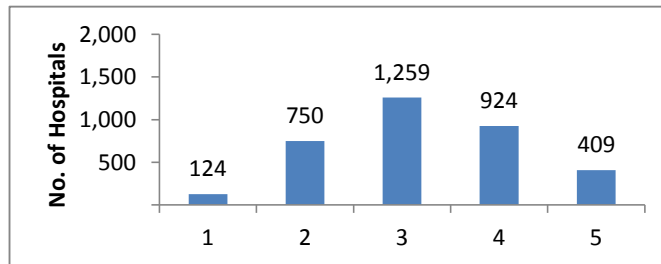
Communication with Nurses

Star Rating	N	%
1	74	2
2	279	8
3	1,230	35
4	1,243	36
5	640	18



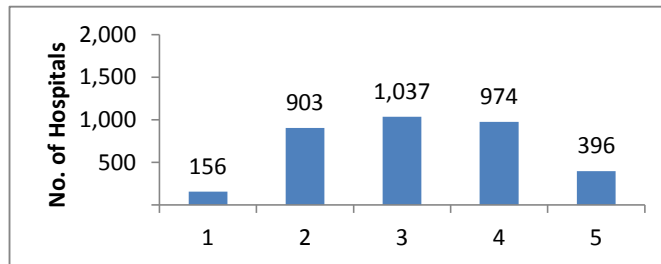
Communication with Doctors

Star Rating	N	%
1	124	4
2	750	22
3	1,259	36
4	924	27
5	409	12



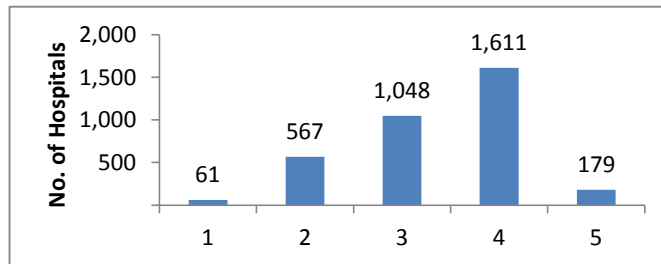
Responsiveness of Hospital Staff

Star Rating	N	%
1	156	5
2	903	26
3	1,037	30
4	974	28
5	396	11



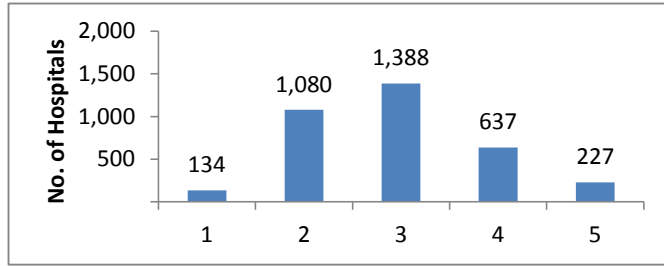
Pain Management

Star Rating	N	%
1	61	2
2	567	16
3	1,048	30
4	1,611	46
5	179	5



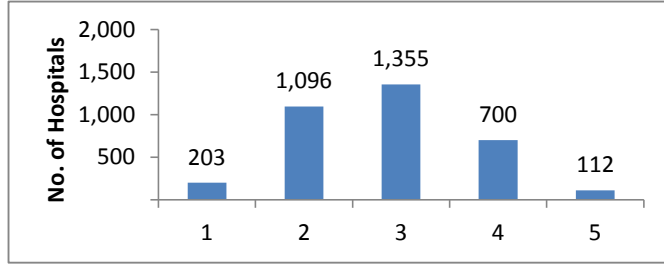
Communication about Medicines

Star Rating	N	%
1	134	4
2	1,080	31
3	1,388	40
4	637	18
5	227	7



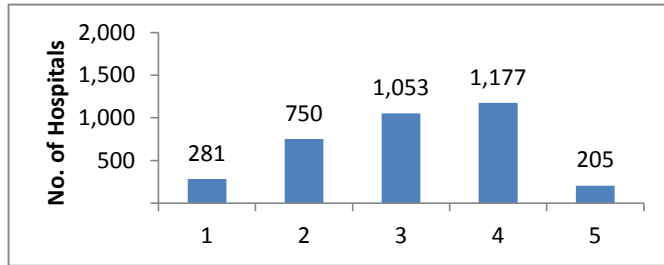
Cleanliness of Hospital Environment

Star Rating	N	%
1	203	6
2	1,096	32
3	1,355	39
4	700	20
5	112	3



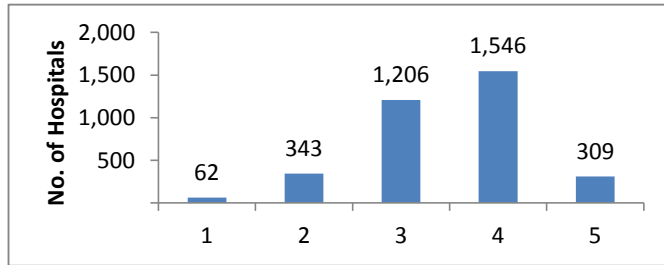
Quietness of Hospital Environment

Star Rating	N	%
1	281	8
2	750	22
3	1,053	30
4	1,177	34
5	205	6



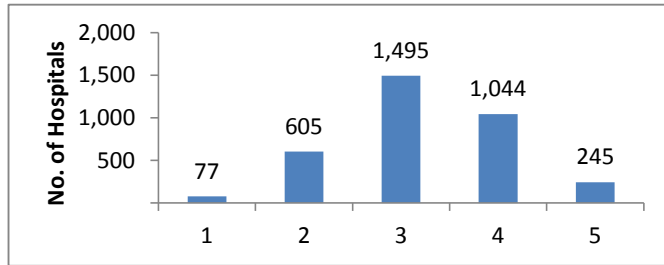
Discharge Information

Star Rating	N	%
1	62	2
2	343	10
3	1,206	35
4	1,546	45
5	309	9



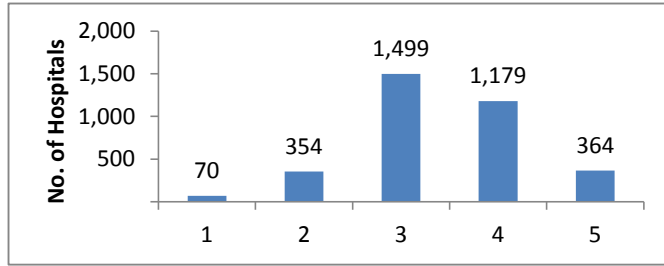
Care Transition

Star Rating	N	%
1	77	2
2	605	17
3	1,495	43
4	1,044	30
5	245	7



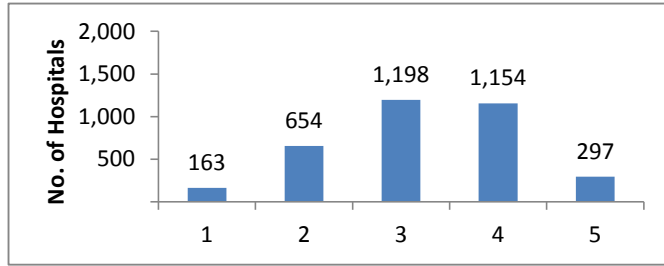
Hospital Rating

Star Rating	N	%
1	70	2
2	354	10
3	1,499	43
4	1,179	34
5	364	11



Recommend the Hospital

Star Rating	N	%
1	163	5
2	654	19
3	1,198	35
4	1,154	33
5	297	9



*These results encompass all hospitals that received HCAHPS scores. Because not all hospitals report their results on Hospital Compare, the values on that Web site may differ from those shown here.

Notes

3466 Hospitals received HCAHPS Star Ratings in April 2018

HCAHPS Star Ratings are based on patients discharged between July 2016 and June 2017

For more information about HCAHPS Star Ratings visit <http://www.hcahpsonline.org/en/hcahps-star-ratings/>

Please use the following citation when referencing material on this website:

<http://www.hcahpsonline.org> Centers for Medicare & Medicaid Services, Baltimore, MD.

Month, Date, Year the page was accessed.