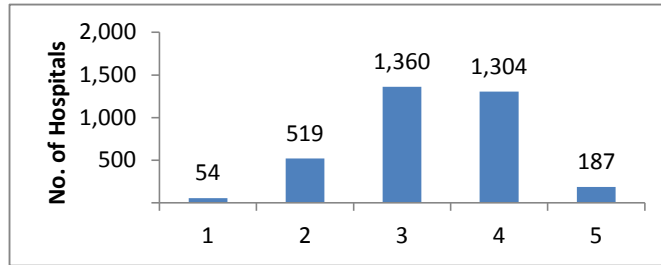


HCAHPS Stars Ratings Distributions for October 2017 Public Reporting (N= 3424 Hospitals)

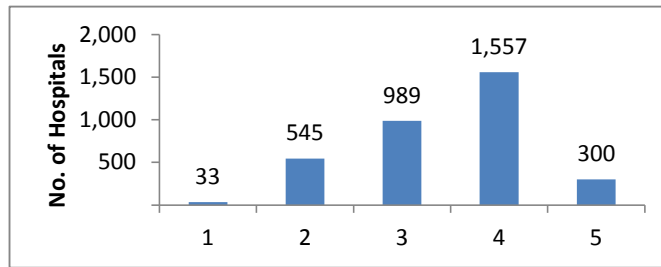
HCAHPS Summary Star Rating

Star Rating	N	%
1	54	2
2	519	15
3	1,360	40
4	1,304	38
5	187	5



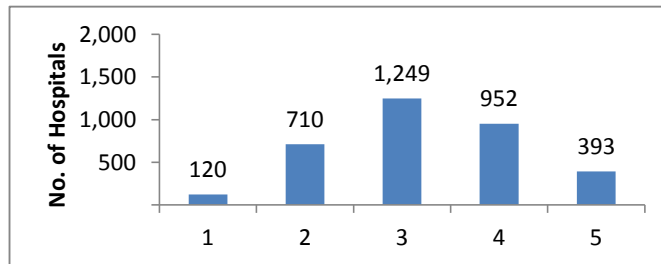
Communication with Nurses

Star Rating	N	%
1	33	1
2	545	16
3	989	29
4	1,557	45
5	300	9



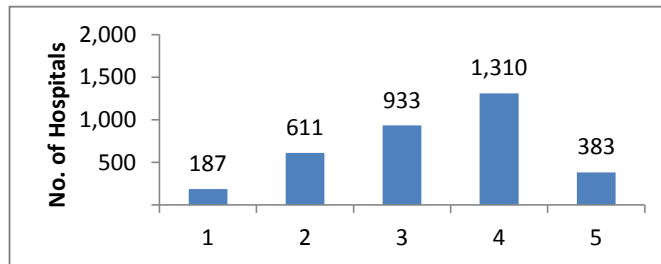
Communication with Doctors

Star Rating	N	%
1	120	4
2	710	21
3	1,249	36
4	952	28
5	393	11



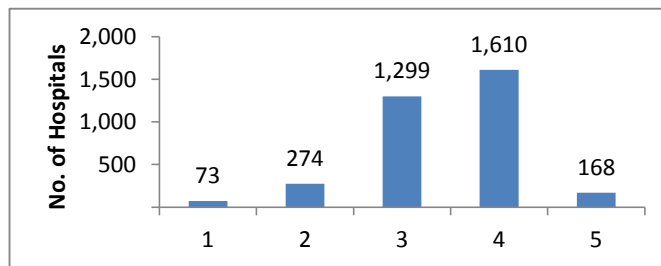
Responsiveness of Hospital Staff

Star Rating	N	%
1	187	5
2	611	18
3	933	27
4	1,310	38
5	383	11



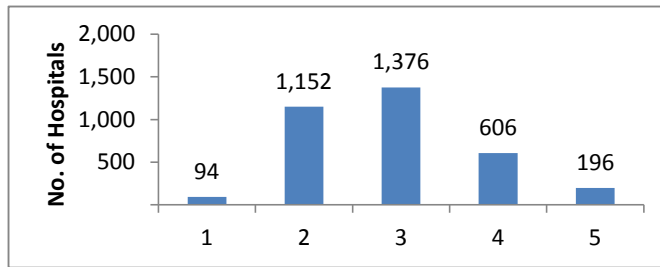
Pain Management

Star Rating	N	%
1	73	2
2	274	8
3	1,299	38
4	1,610	47
5	168	5



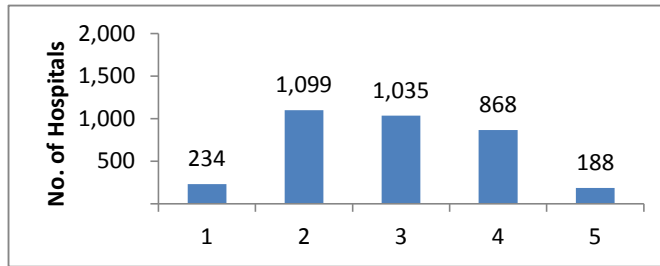
Communication about Medicines

Star Rating	N	%
1	94	3
2	1,152	34
3	1,376	40
4	606	18
5	196	6



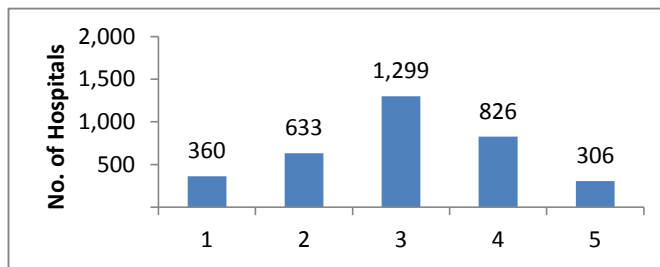
Cleanliness of Hospital Environment

Star Rating	N	%
1	234	7
2	1,099	32
3	1,035	30
4	868	25
5	188	5



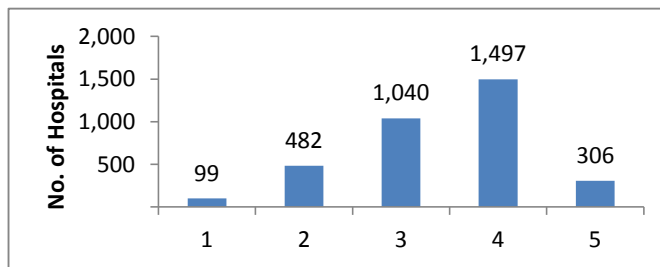
Quietness of Hospital Environment

Star Rating	N	%
1	360	11
2	633	18
3	1,299	38
4	826	24
5	306	9



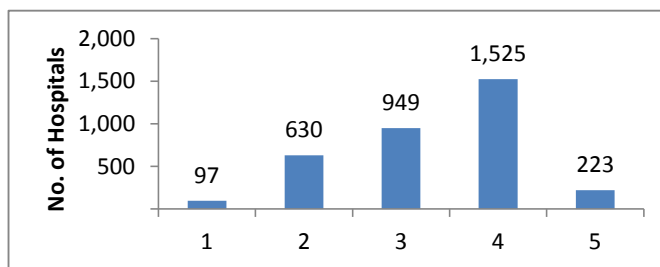
Discharge Information

Star Rating	N	%
1	99	3
2	482	14
3	1,040	30
4	1,497	44
5	306	9



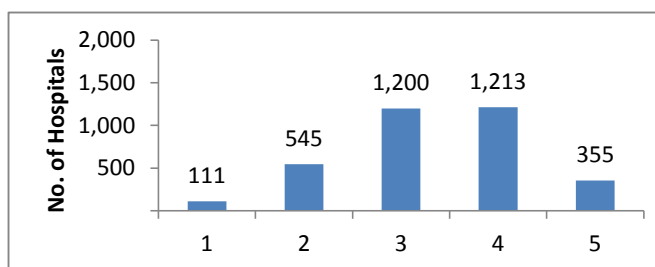
Care Transition

Star Rating	N	%
1	97	3
2	630	18
3	949	28
4	1,525	45
5	223	7



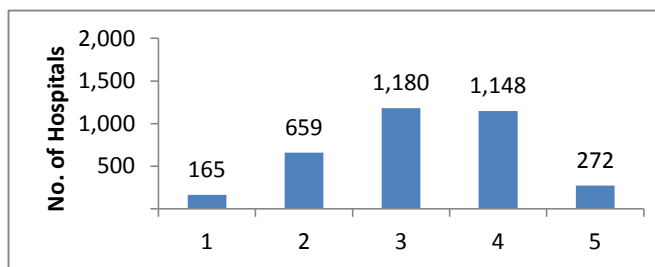
Hospital Rating

Star Rating	N	%
1	111	3
2	545	16
3	1,200	35
4	1,213	35
5	355	10



Recommend the Hospital

Star Rating	N	%
1	165	5
2	659	19
3	1,180	34
4	1,148	34
5	272	8



*These results encompass all hospitals that received HCAHPS scores. Because not all hospitals report their results on Hospital Compare, the values on that Web site may differ from those shown here.

Notes

3424 Hospitals received HCAHPS Star Ratings in October 2017

HCAHPS Star Ratings are based on patients discharged between January 2016 and December 2016

For more information about HCAHPS Star Ratings visit <http://www.hcahponline.org/StarRatings.aspx>

Please use the following citation when referencing material on this website:

<http://www.hcahponline.org> Centers for Medicare & Medicaid Services, Baltimore, MD.

Month, Date, Year the page was accessed.