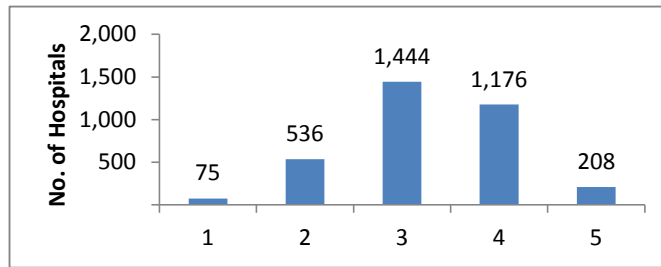


HCAHPS Stars Ratings Distributions for July 2017 Public Reporting (N= 3439 Hospitals)

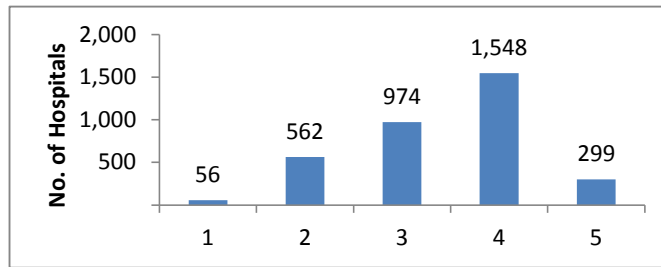
HCAHPS Summary Star Rating

Star Rating	N	%
1	75	2
2	536	16
3	1,444	42
4	1,176	34
5	208	6



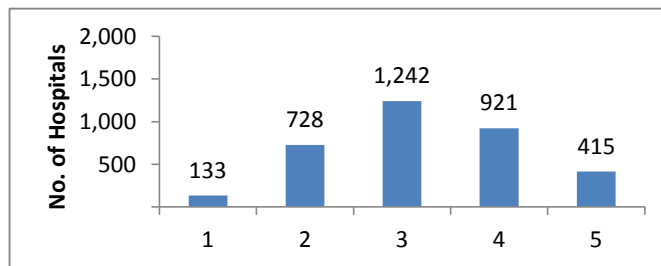
Communication with Nurses

Star Rating	N	%
1	56	2
2	562	16
3	974	28
4	1,548	45
5	299	9



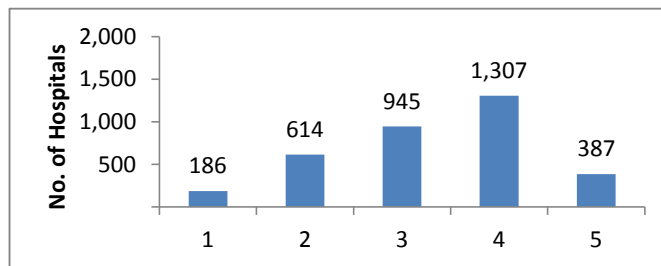
Communication with Doctors

Star Rating	N	%
1	133	4
2	728	21
3	1,242	36
4	921	27
5	415	12



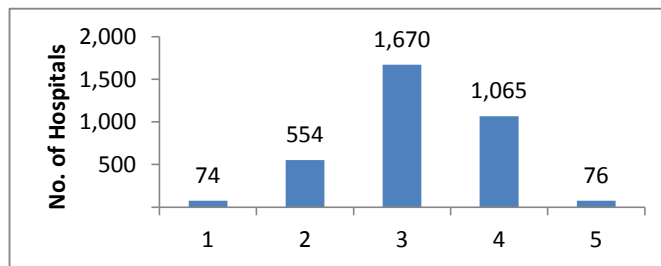
Responsiveness of Hospital Staff

Star Rating	N	%
1	186	5
2	614	18
3	945	27
4	1,307	38
5	387	11



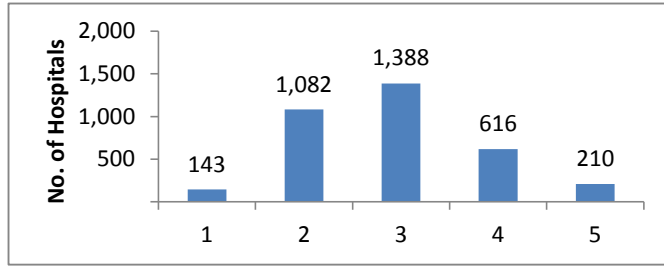
Pain Management

Star Rating	N	%
1	74	2
2	554	16
3	1,670	49
4	1,065	31
5	76	2



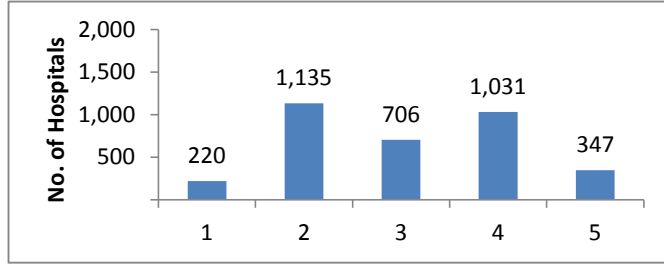
Communication about Medicines

Star Rating	N	%
1	143	4
2	1,082	31
3	1,388	40
4	616	18
5	210	6



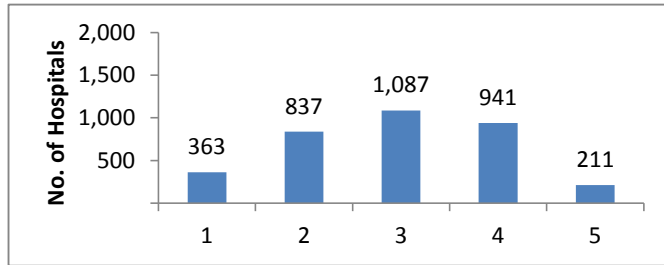
Cleanliness of Hospital Environment

Star Rating	N	%
1	220	6
2	1,135	33
3	706	21
4	1,031	30
5	347	10



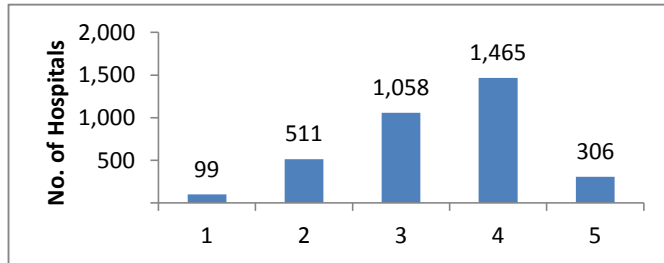
Quietness of Hospital Environment

Star Rating	N	%
1	363	11
2	837	24
3	1,087	32
4	941	27
5	211	6



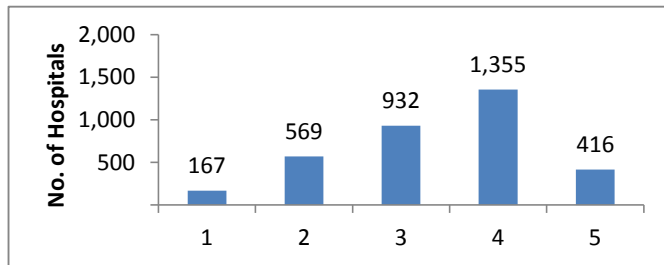
Discharge Information

Star Rating	N	%
1	99	3
2	511	15
3	1,058	31
4	1,465	43
5	306	9



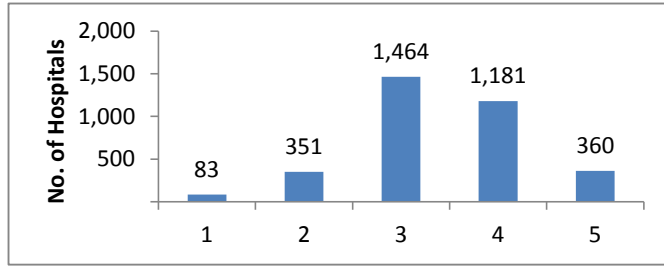
Care Transition

Star Rating	N	%
1	167	5
2	569	17
3	932	27
4	1,355	39
5	416	12



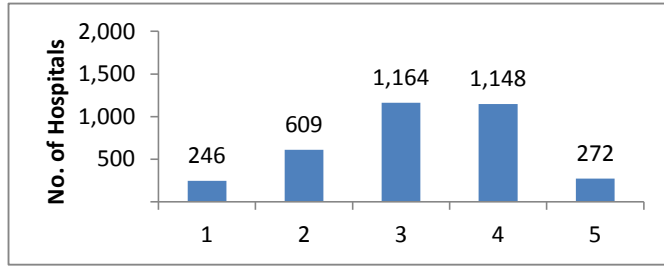
Hospital Rating

Star Rating	N	%
1	83	2
2	351	10
3	1,464	43
4	1,181	34
5	360	10



Recommend the Hospital

Star Rating	N	%
1	246	7
2	609	18
3	1,164	34
4	1,148	33
5	272	8



*These results encompass all hospitals that received HCAHPS scores. Because not all hospitals report their results on Hospital Compare, the values on that Web site may differ from those shown here.

Notes

3439 Hospitals received HCAHPS Star Ratings in July 2017

HCAHPS Star Ratings are based on patients discharged between October 2015 and September 2016

For more information about HCAHPS Star Ratings visit <http://www.hcahpsonline.org/StarRatings.aspx>

Please use the following citation when referencing material on this website:

<http://www.hcahpsonline.org> Centers for Medicare & Medicaid Services, Baltimore, MD.

Month, Date, Year the page was accessed.