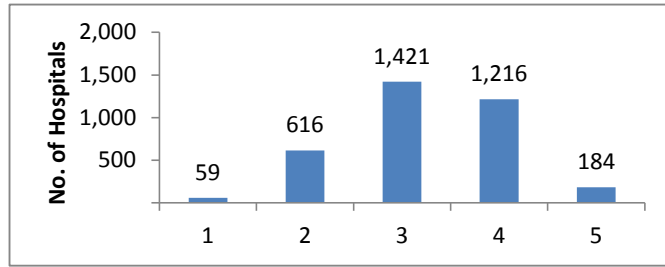


HCAHPS Stars Ratings Distributions for December 2016 Public Reporting (N= 3496 Hospitals)

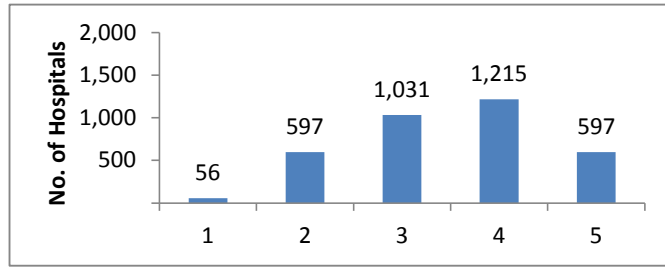
HCAHPS Summary Star Rating

Star Rating	N	%
1	59	2
2	616	18
3	1,421	41
4	1,216	35
5	184	5



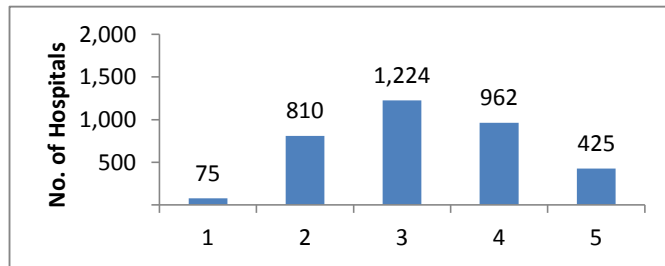
Communication with Nurses

Star Rating	N	%
1	56	2
2	597	17
3	1,031	29
4	1,215	35
5	597	17



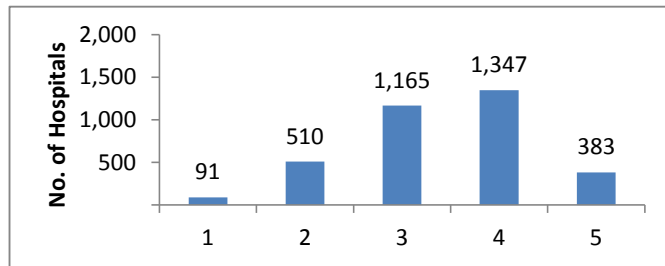
Communication with Doctors

Star Rating	N	%
1	75	2
2	810	23
3	1,224	35
4	962	28
5	425	12



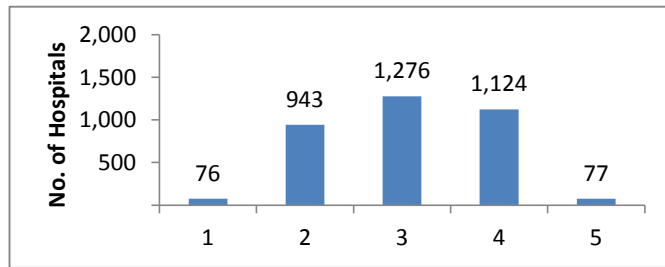
Responsiveness of Hospital Staff

Star Rating	N	%
1	91	3
2	510	15
3	1,165	33
4	1,347	39
5	383	11



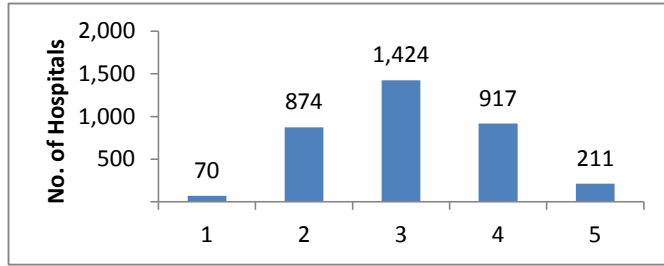
Pain Management

Star Rating	N	%
1	76	2
2	943	27
3	1,276	36
4	1,124	32
5	77	2



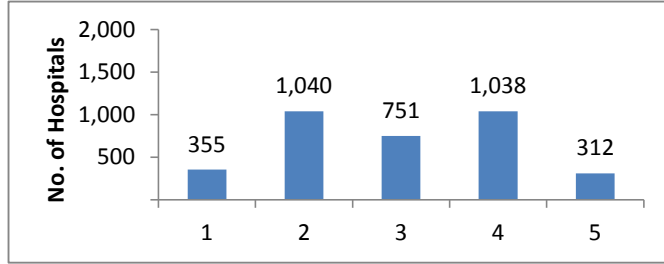
Communication about Medicines

Star Rating	N	%
1	70	2
2	874	25
3	1,424	41
4	917	26
5	211	6



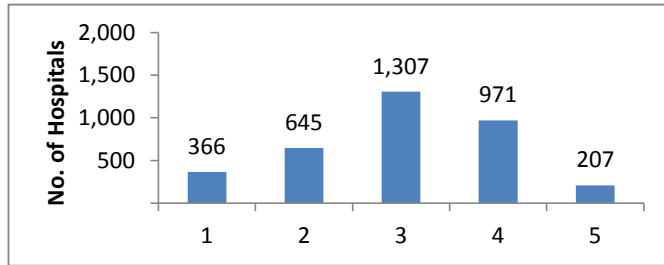
Cleanliness of Hospital Environment

Star Rating	N	%
1	355	10
2	1,040	30
3	751	21
4	1,038	30
5	312	9



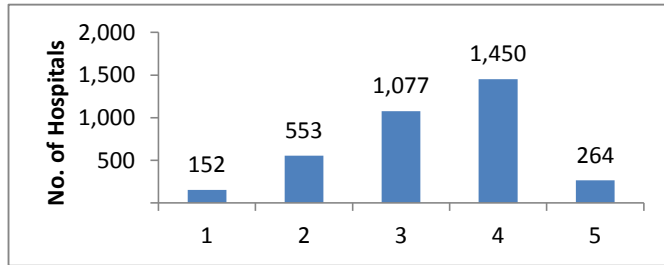
Quietness of Hospital Environment

Star Rating	N	%
1	366	10
2	645	18
3	1,307	37
4	971	28
5	207	6



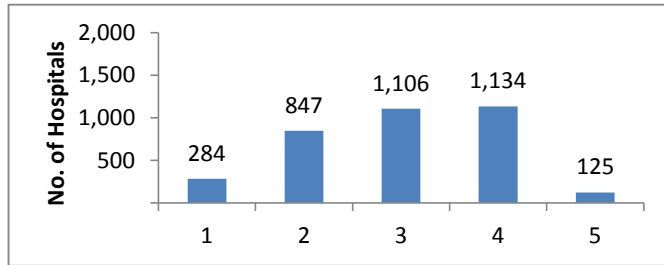
Discharge Information

Star Rating	N	%
1	152	4
2	553	16
3	1,077	31
4	1,450	41
5	264	8



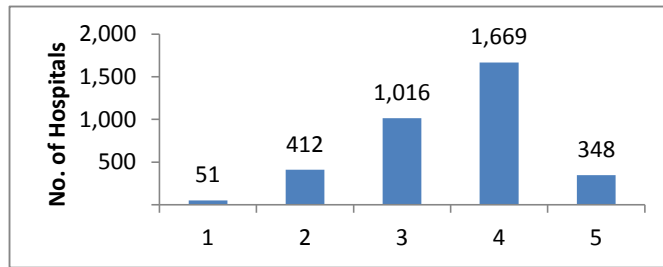
Care Transition

Star Rating	N	%
1	284	8
2	847	24
3	1,106	32
4	1,134	32
5	125	4



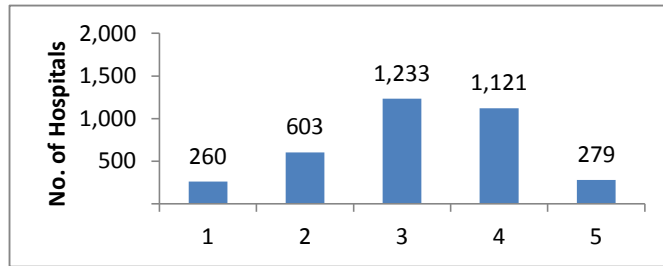
Hospital Rating

Star Rating	N	%
1	51	1
2	412	12
3	1,016	29
4	1,669	48
5	348	10



Recommend the Hospital

Star Rating	N	%
1	260	7
2	603	17
3	1,233	35
4	1,121	32
5	279	8



*These results encompass all hospitals that received HCAHPS scores. Because not all hospitals report their results on Hospital Compare, the values on that Web site may differ from those shown here.

Notes

3496 Hospitals received HCAHPS Star Ratings in December 2016

HCAHPS Star Ratings are based on patients discharged between April 2015 and March 2016

For more information about HCAHPS Star Ratings visit <http://www.hcahponline.org/StarRatings.aspx>

Please use the following citation when referencing material on this website:

<http://www.hcahponline.org> Centers for Medicare & Medicaid Services, Baltimore, MD.

Month, Date, Year the page was accessed.