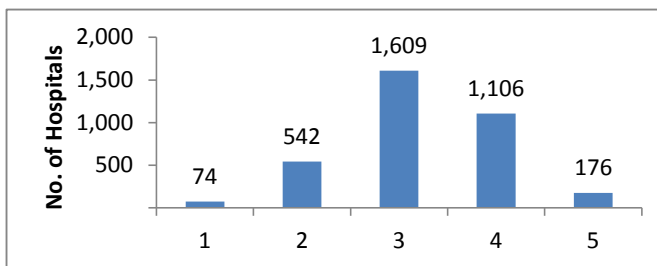


HCAHPS Stars Ratings Distributions for October 2016 Public Reporting (N= 3507 Hospitals)

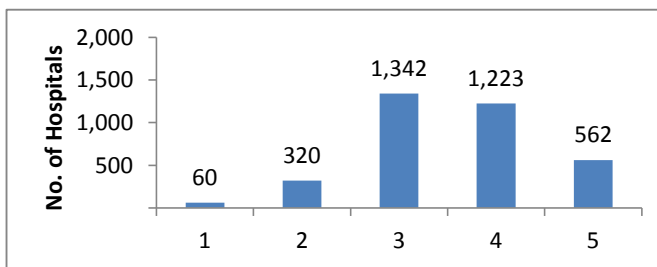
HCAHPS Summary Star Rating

Star Rating	N	%
1	74	2
2	542	15
3	1,609	46
4	1,106	32
5	176	5



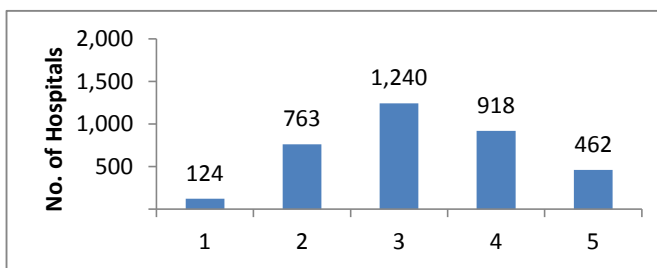
Communication with Nurses

Star Rating	N	%
1	60	2
2	320	9
3	1,342	38
4	1,223	35
5	562	16



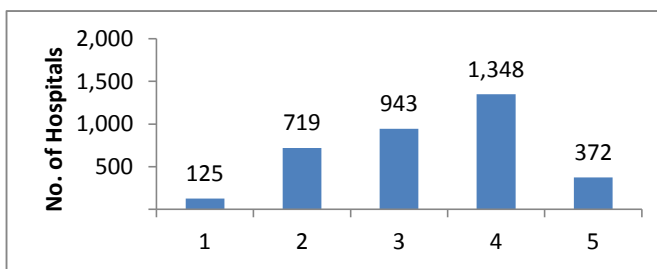
Communication with Doctors

Star Rating	N	%
1	124	4
2	763	22
3	1,240	35
4	918	26
5	462	13



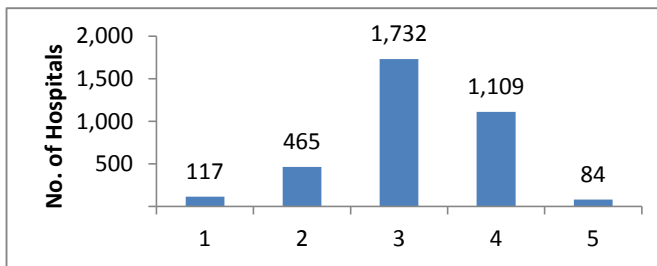
Responsiveness of Hospital Staff

Star Rating	N	%
1	125	4
2	719	21
3	943	27
4	1,348	38
5	372	11



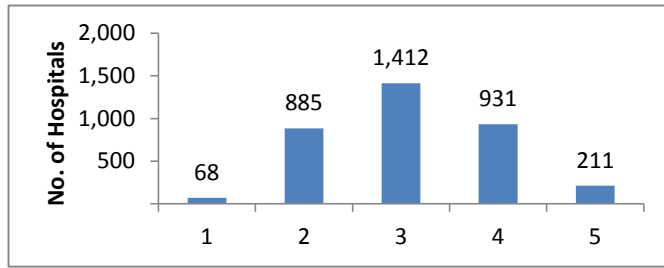
Pain Management

Star Rating	N	%
1	117	3
2	465	13
3	1,732	49
4	1,109	32
5	84	2



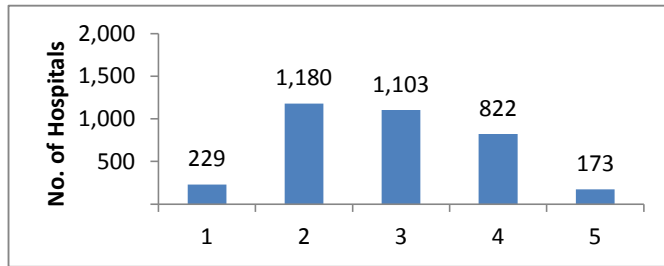
Communication about Medicines

Star Rating	N	%
1	68	2
2	885	25
3	1,412	40
4	931	27
5	211	6



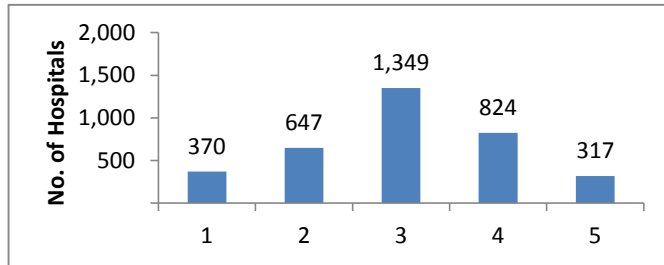
Cleanliness of Hospital Environment

Star Rating	N	%
1	229	7
2	1,180	34
3	1,103	31
4	822	23
5	173	5



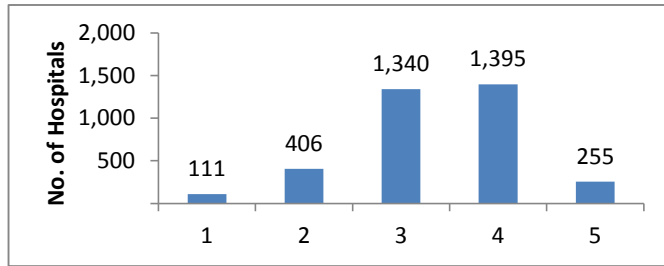
Quietness of Hospital Environment

Star Rating	N	%
1	370	11
2	647	18
3	1,349	38
4	824	23
5	317	9



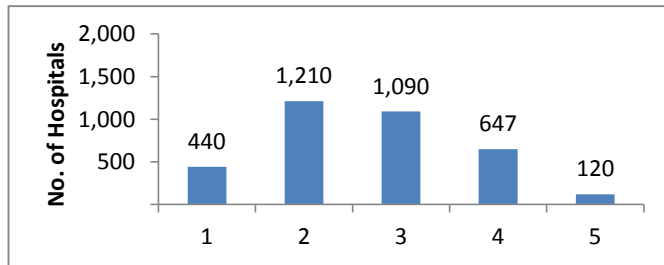
Discharge Information

Star Rating	N	%
1	111	3
2	406	12
3	1,340	38
4	1,395	40
5	255	7



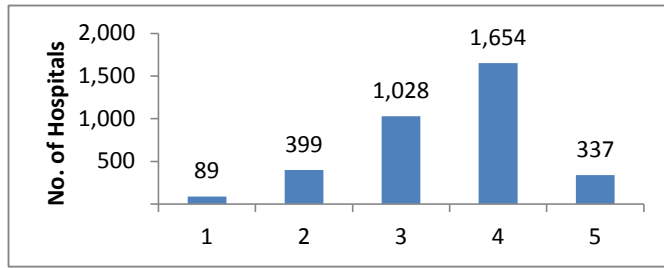
Care Transition

Star Rating	N	%
1	440	13
2	1,210	35
3	1,090	31
4	647	18
5	120	3



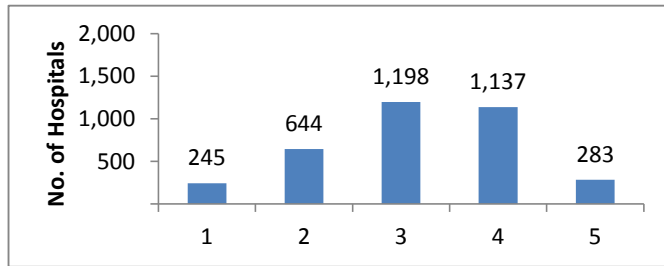
Hospital Rating

Star Rating	N	%
1	89	3
2	399	11
3	1,028	29
4	1,654	47
5	337	10



Recommend the Hospital

Star Rating	N	%
1	245	7
2	644	18
3	1,198	34
4	1,137	32
5	283	8



*These results encompass all hospitals that received HCAHPS scores. Because not all hospitals report their results on Hospital Compare, the counts on that Web site may differ from those shown here.

Notes

3507 Hospitals received HCAHPS Star Ratings in October 2016

HCAHPS Star Ratings are based on patients discharged between January 2015 and December 2015

For more information about HCAHPS Star Ratings visit <http://www.hcahponline.org/StarRatings.aspx>

Please use the following citation when referencing material on this website:

<http://www.hcahponline.org> Centers for Medicare & Medicaid Services, Baltimore, MD.

Month, Date, Year the page was accessed.